

Active Cancer Cells Double in Number Every 90 Days

90 days 2 cells

1 year 16 cells

*2 years 256 cells—Detected at this stage by Thermography

3 years 4,896 cells

4 years 65,536 cells

5 years 1,048,576 cells (still undetectable) 6 years 16,777,216 cells

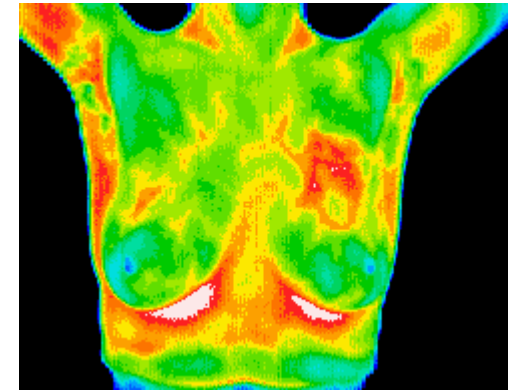
7 years 268,435,456 cells

*8 years 4,294,967,296 cells (doubled 32 times)

Normally detectable by Mammogram at this stage

40 Doublings (Aprox 10 Years) considered lethal

This chart shows that abnormal cells are present in the breast at least 8 years before a woman will have a positive mammogram. Here the abnormal cells are seen with a thermogram at approximately 256 cells giving this woman the earliest possible indication of a developing pathology and time to take preventative measures.



“Thermography is not a stand alone device and does not replace mammography or any other diagnostic device or examination and is recommended as an adjunct to mammography.”